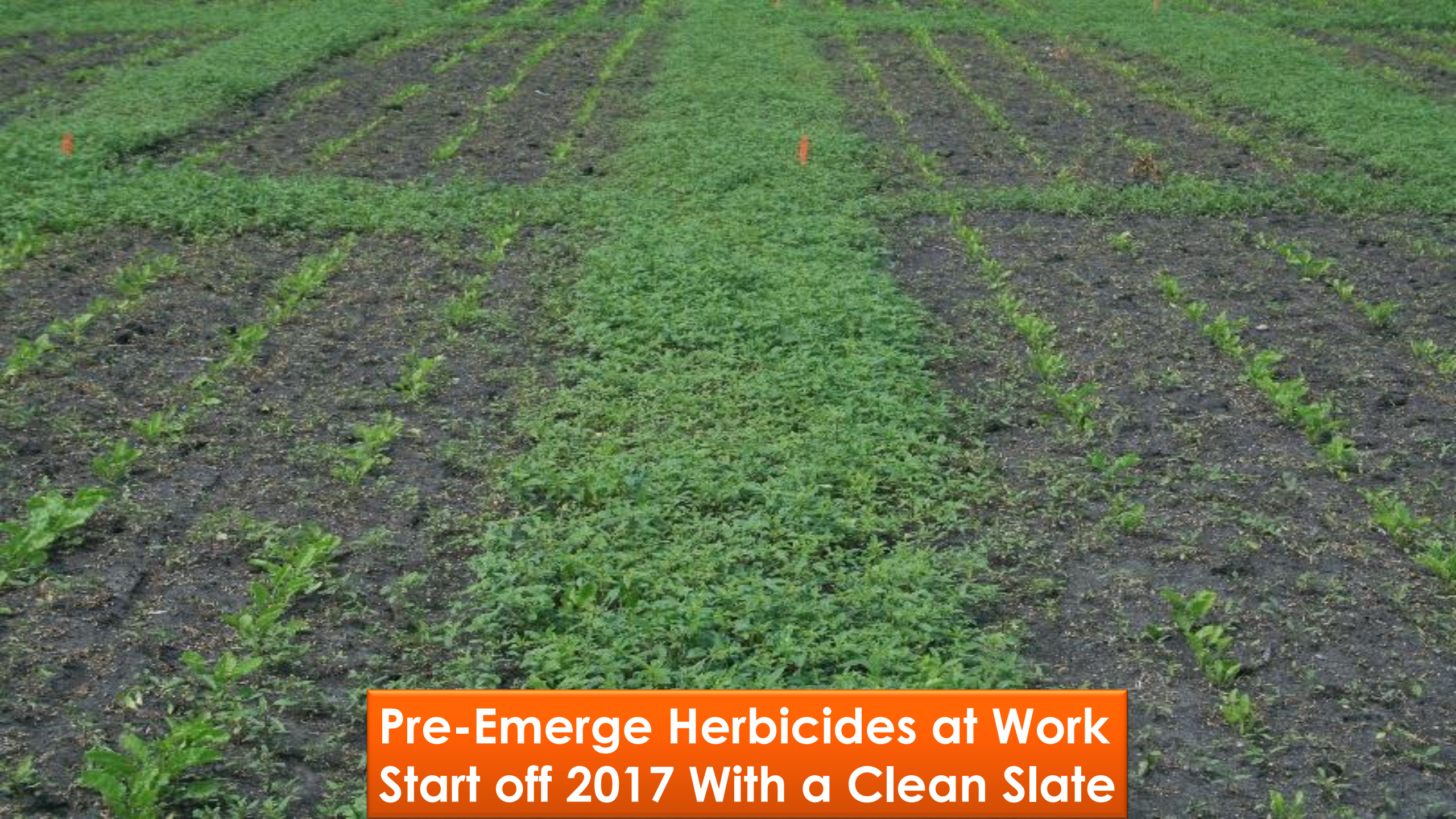


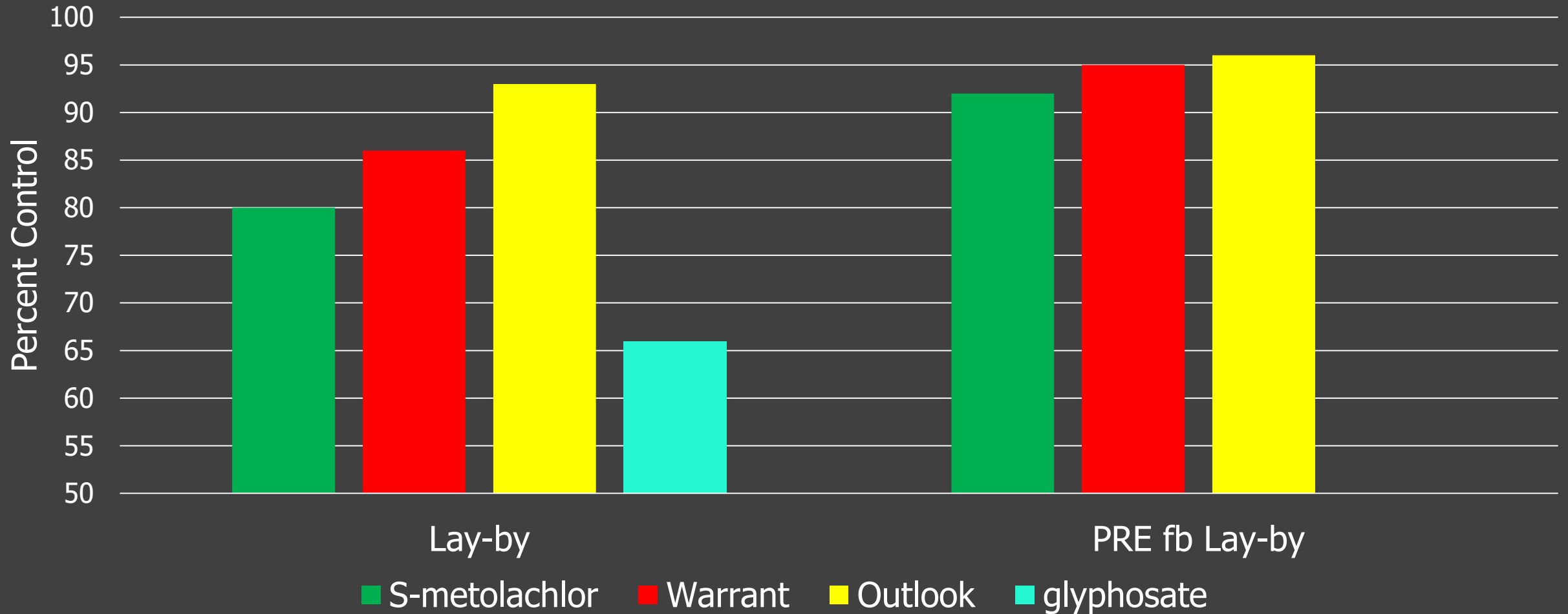
A wide-angle photograph of a field filled with waterhemp plants. The plants are green and have large, rounded leaves. In the center of the image, there is a horizontal orange banner with white text. The background shows a flat landscape under a clear sky, with some distant trees and utility poles.

Waterhemp Control 2017

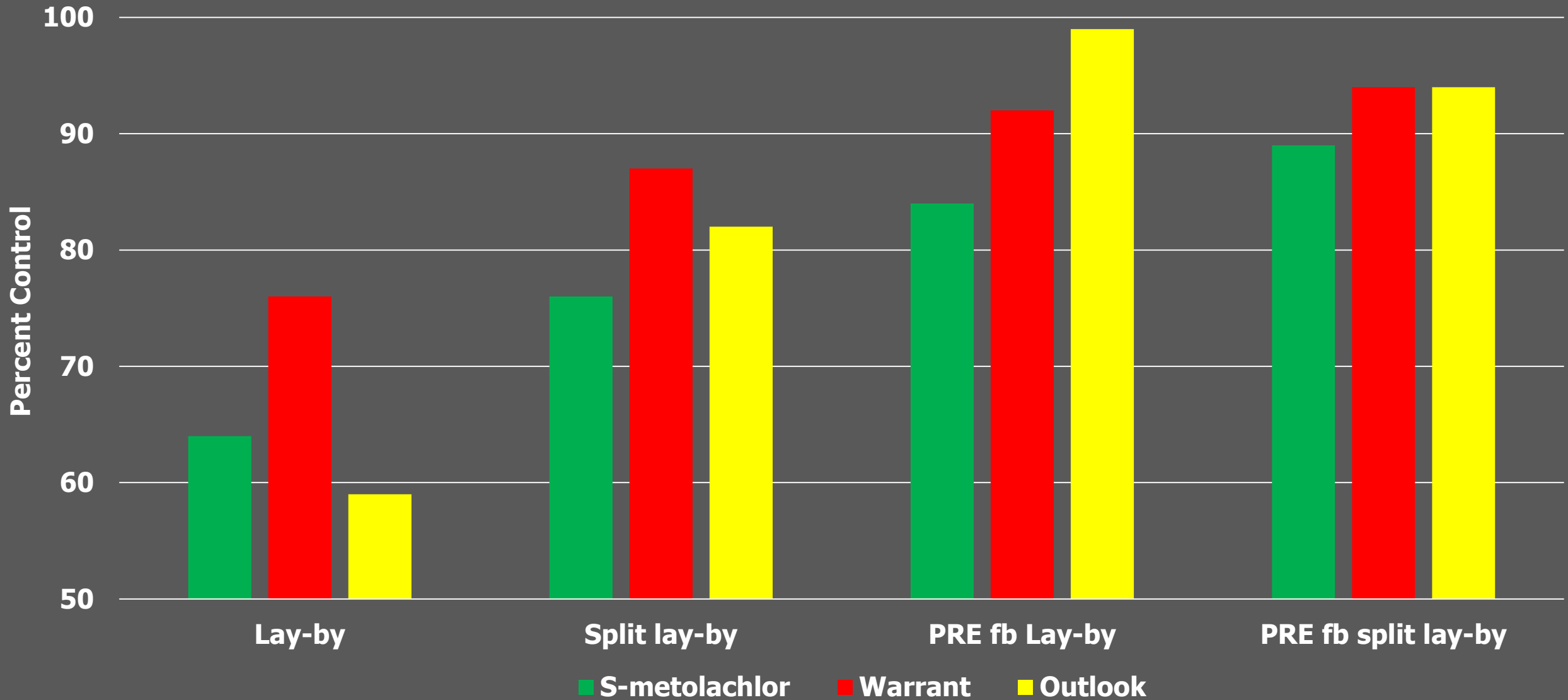


**Pre-Emerge Herbicides at Work
Start off 2017 With a Clean Slate**

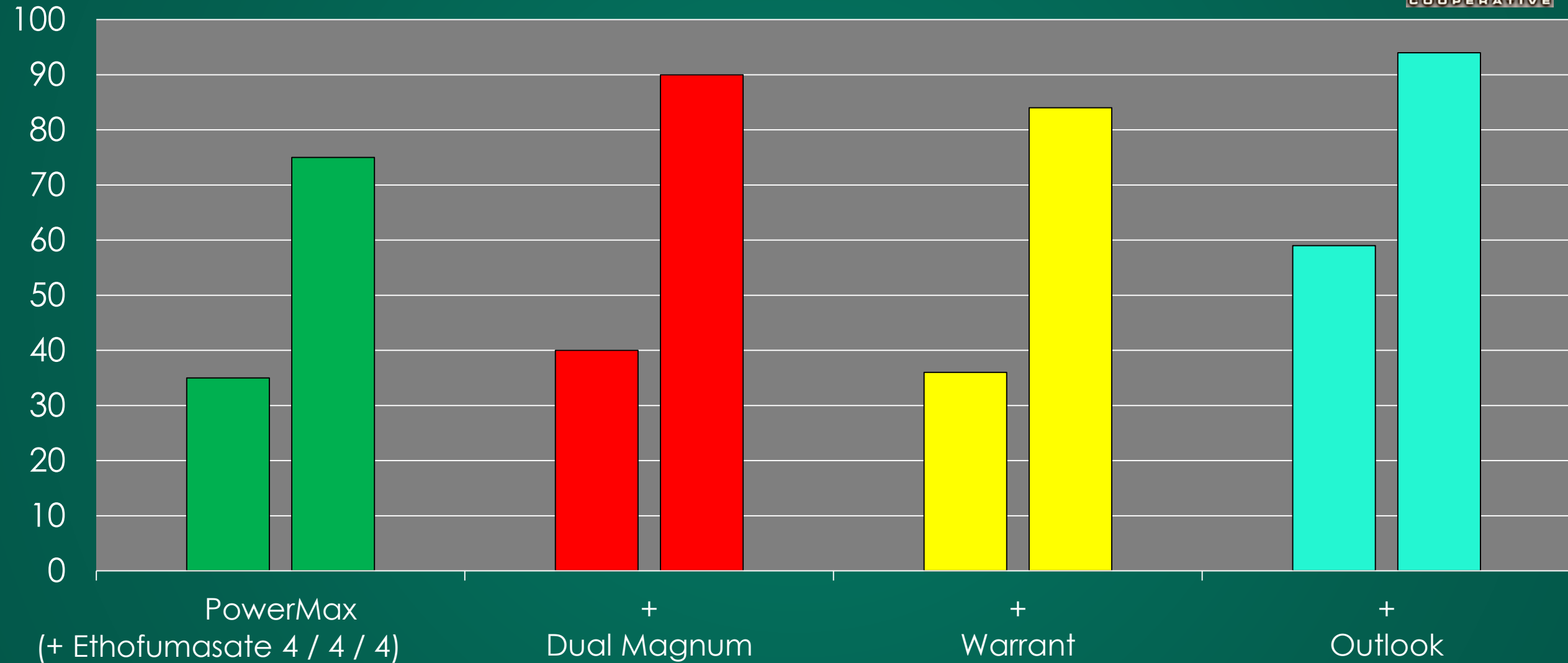
Lay-by vs. PRE+Lay-By...



Lay-By vs. Split Lay-By...



Lay-By Application + Ethofumasate





**PowerMax + Outlook
(48 days after last treatment)**



**PMax + Ethofumasate + Outlook
(48 days after last treatment)**

2017 Waterhemp Control Recs...



- Data shows that the best control is achieved by applying Dual and/or ethofumesate PRE followed by a split lay-by application of a chloroacetamide herbicide applied at 2-lf sugarbeets *fb* an application at 4 to 6-lf sugarbeets
- Add ethofumesate to all lay-by applications regardless of 'timing'
- There isn't much left for 'rescue' treatments – except the cultivator